



# PREbeton Ltd.

Company Introduction



# P R E **beton**



Factory



Results



Sustainability



Introduction



Manpower



## Introduction



1996. 01. 01.



Establishment of the company

2019. 07. 01.



PREbeton phase 1. opening

2019. 07. 03.



Start of work

2019. 08.



Site design

2020. 01.



Introduction of ISO 9001, 14001, 45001

2020. 10.



The first 1000 m<sup>3</sup> applied concrete

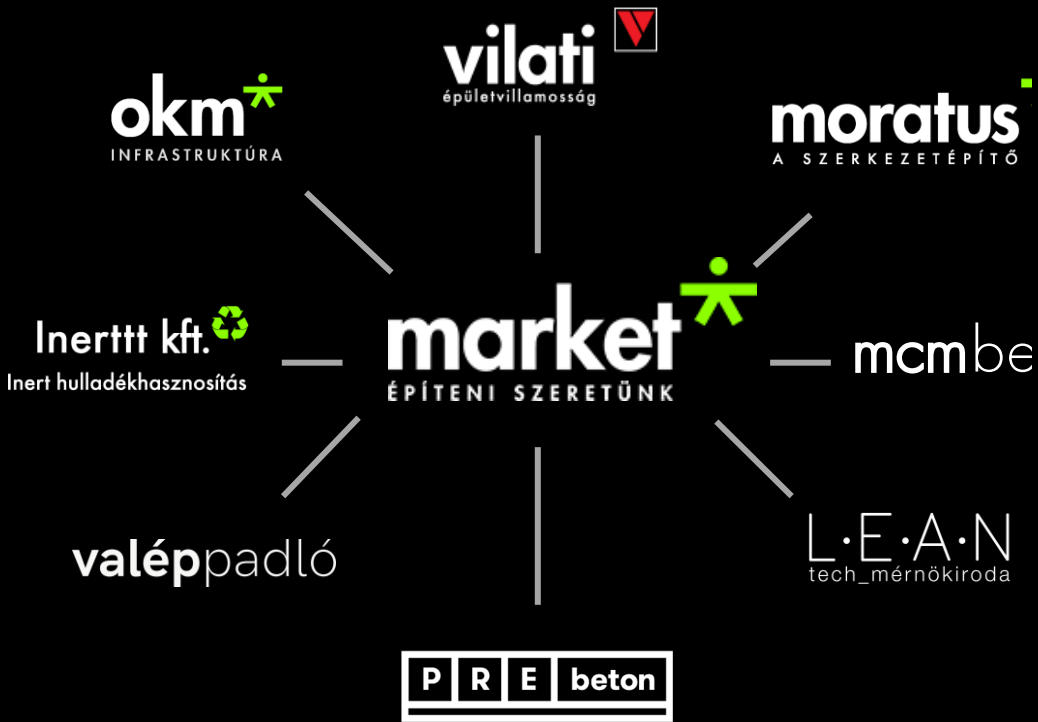
2021. 05.



10 000 m<sup>3</sup> applied concrete



# Introduction



2021.08



Implement Lean method

2022.05



PREbeton phase 2 expansion

2022.07



Handover of the first building with a sandwich wall structure

2023.02



Production over 200 m³ a day

2023.08



Start of PREbeton 3 project

2023. 10.



70 000 m³ applied concrete

2024.

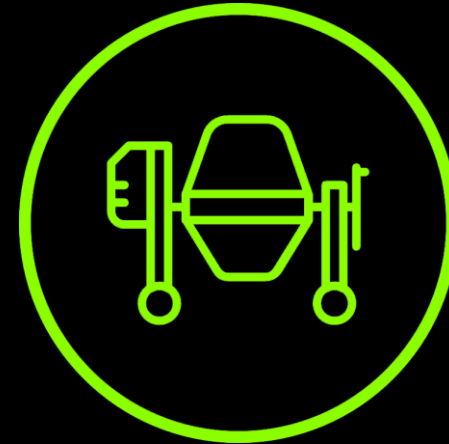


Present



## Factory

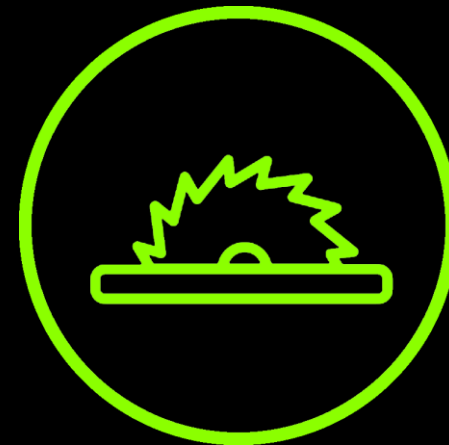
- Factory area: 60.000 m<sup>2</sup>
- Production area: 20.000 m<sup>2</sup>
- Finished goods storage area: 12.000 m<sup>2</sup>
- Annual production capacity: 50.000 m<sup>3</sup>
- Annual rebar working: 12.000 tons
- Largest producable element 60 tons, l=40 m
- Max. beam tense capacity 600 tons
- We use/produce high-strength, self compacting concrete (SCC) C50/60, decor concrete, structured and pigmented concrete
- Most modern Construx formwork system



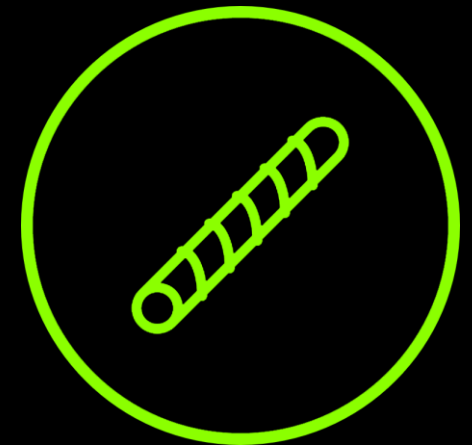
Concrete plant



Locksmith workshop



Woodworking shop



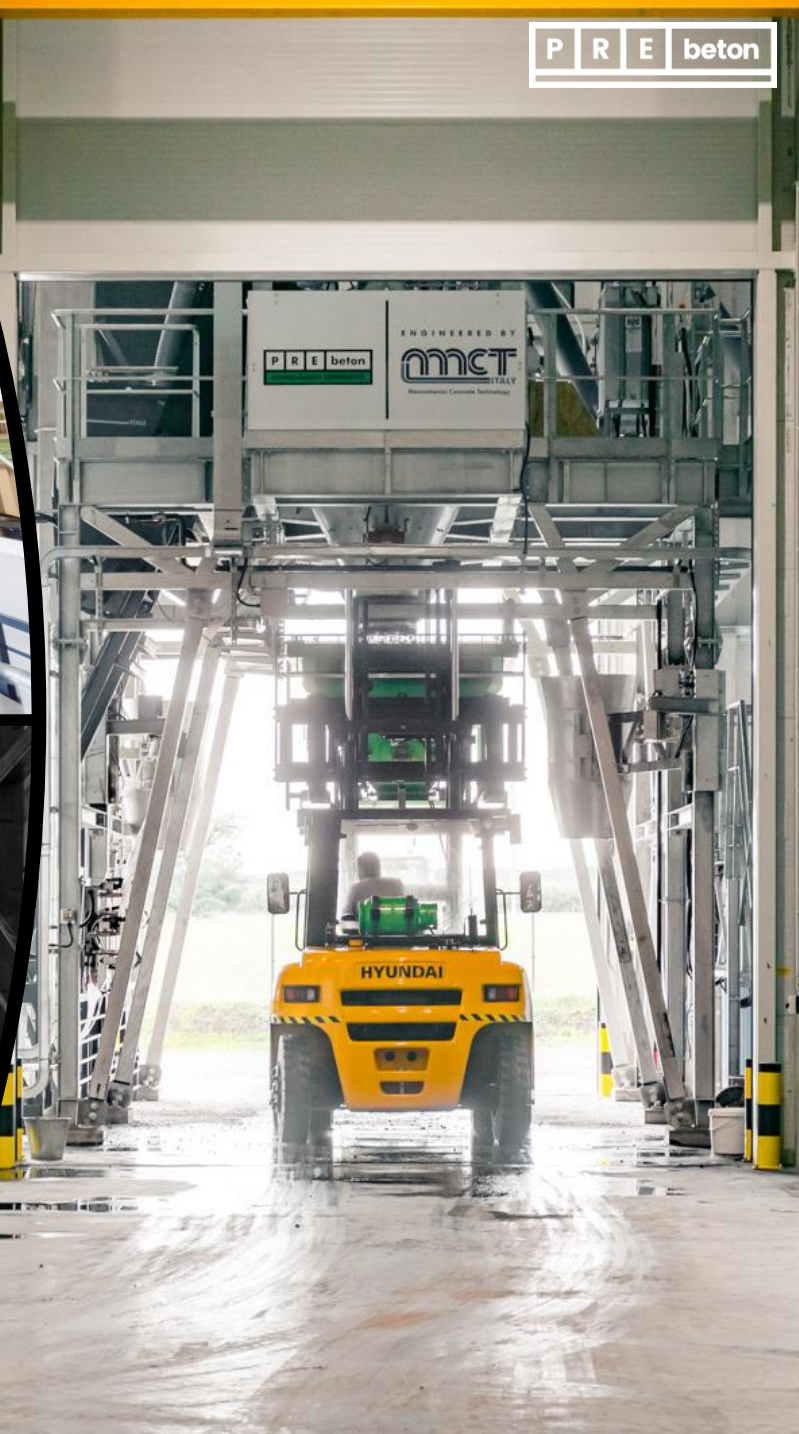
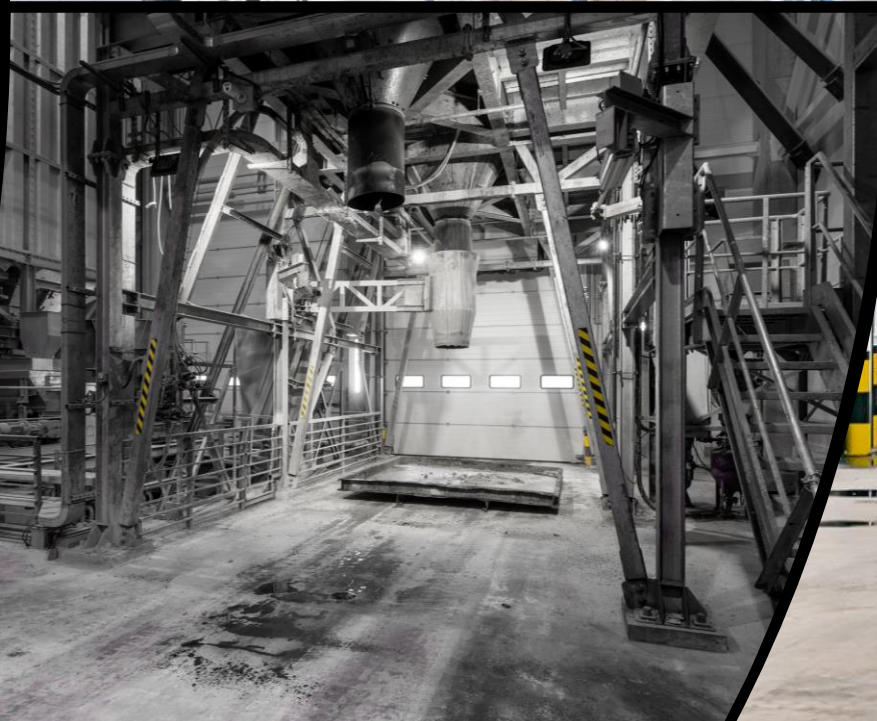
Rebar plant





## Concrete plant

- Maximum capacity of daily concrete production 250 m<sup>3</sup>
- Automatic color mixing
- Automatic plastic fiber and steel fiber rationing
- Heated additive containers
- Continuous presence of a concrete technologist
- Continuous quality checking





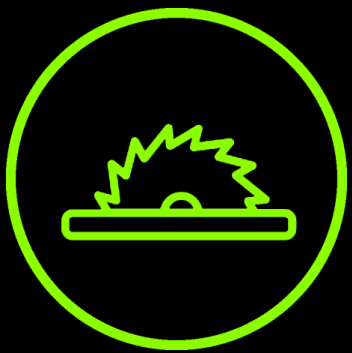


## Locksmith workshop

- Daily fitting production 120 pcs
- Edge banding machine
- Hydraulic swing-cut guillotine shear
- CNC plasma cutting table
- Hand-held plasma cutter
- CO welding machine
- Turning-lathe machine
- Stud welding machine







## Woodworking shop

- CNC router machine
- Vertical panel saw
- 2 pcs format circular saw
- Bandsaw
- Planer machine







## Rebar plant

- 2 pcs MEP Automatic rebar coil stirrup bender - cutter machine
- 1 pc MEP Automatic rebar stirrup bender - cutter machine
- 1 pc MEP Automatic rebar cutter machine
- Rebar mesh bender machine







## Manpower

- White-collar workers: 85 pers.
- Blue-collar workers: 63 pers.
- Subcontractor workers: 356 pers.







## Results

Successively expanding partnership

Stable workplace

Competitive price

Successively expanding product range

Results in 2023:

31 000 m<sup>3</sup> utilized concrete

16 430 pcs produced elements

7 000 tons of processed rebar

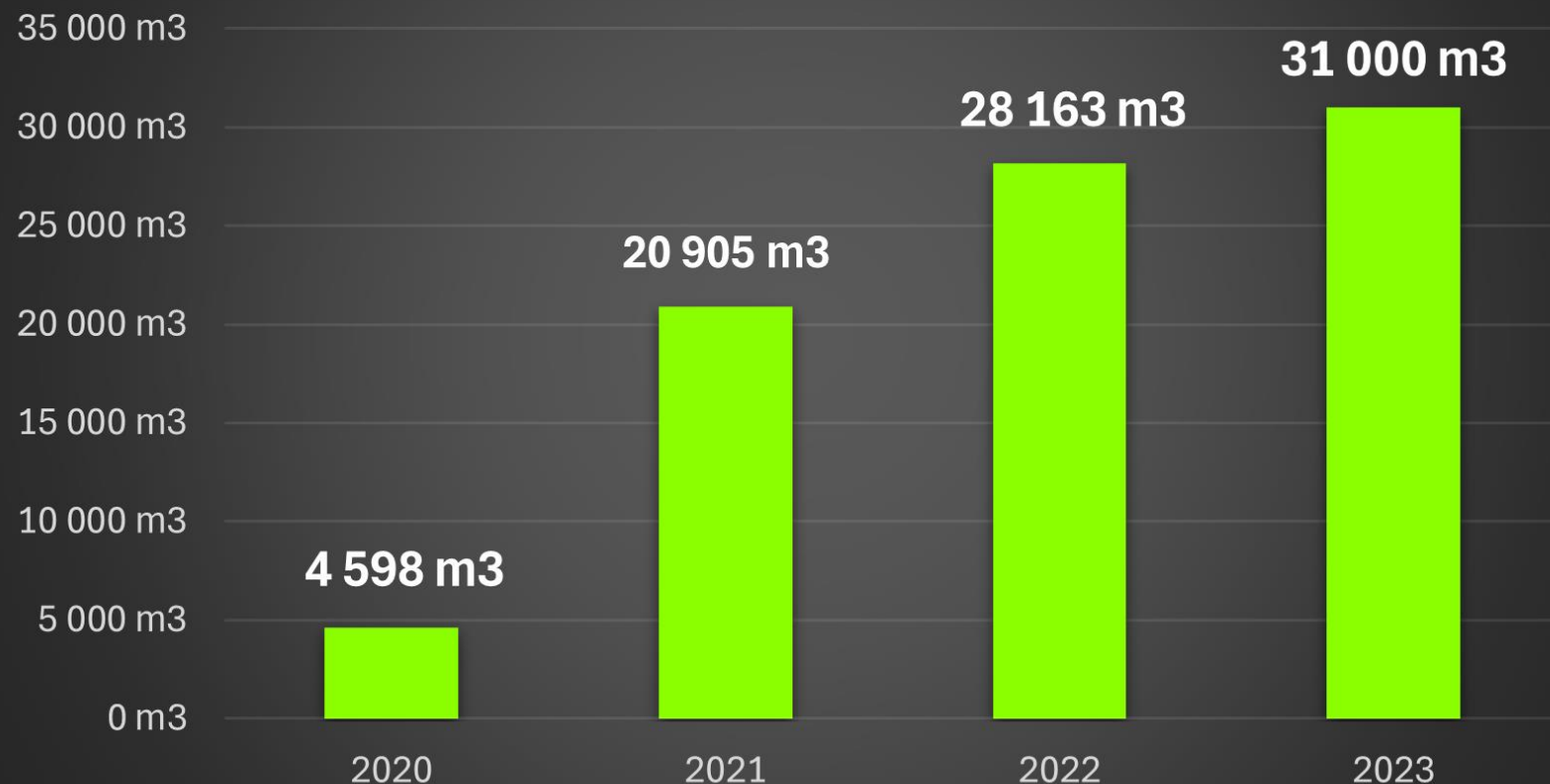
30 finished projects

Net sales over 12 billion HUF in 2023



## Results

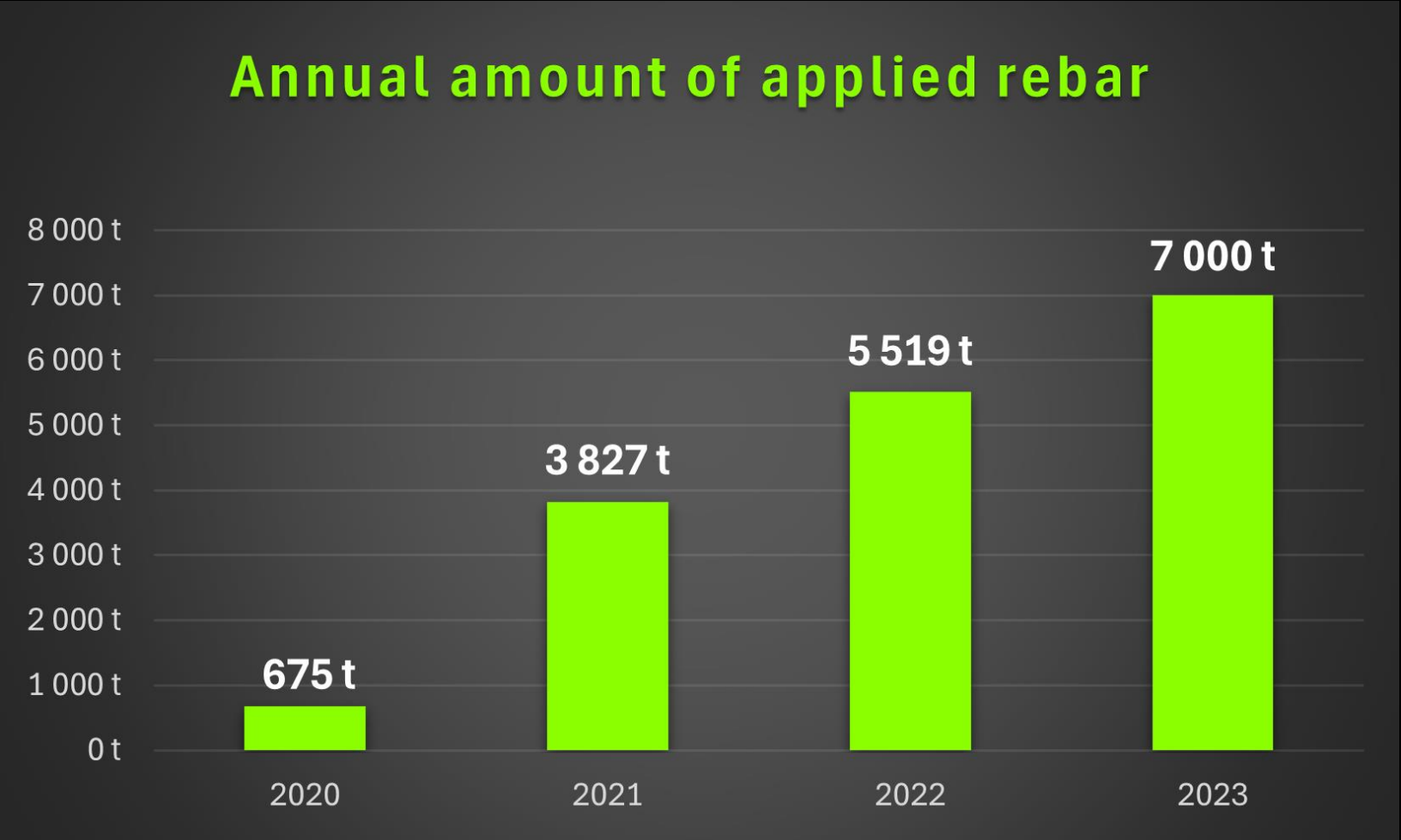
### Annual amount of applied concrete





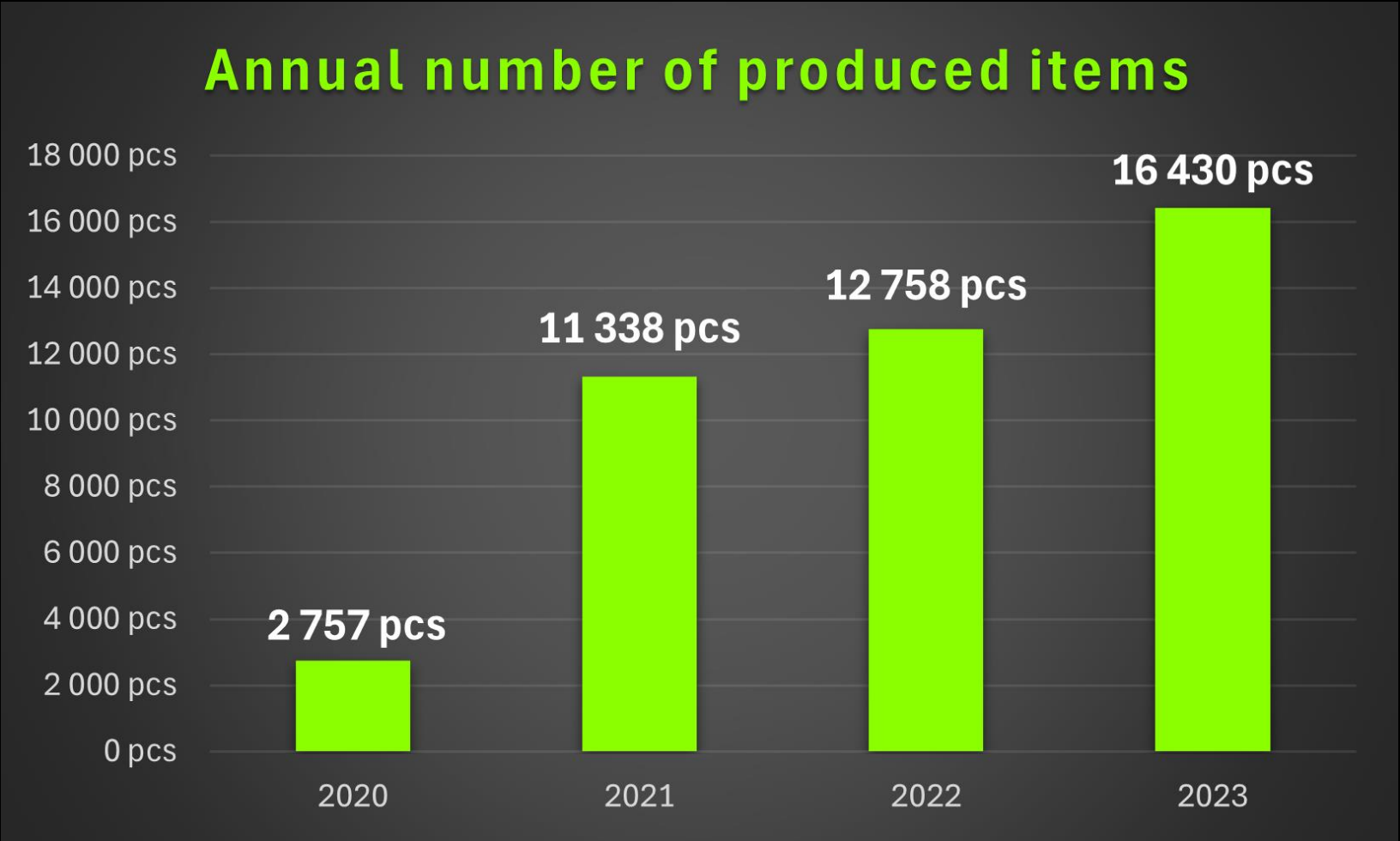


# Results





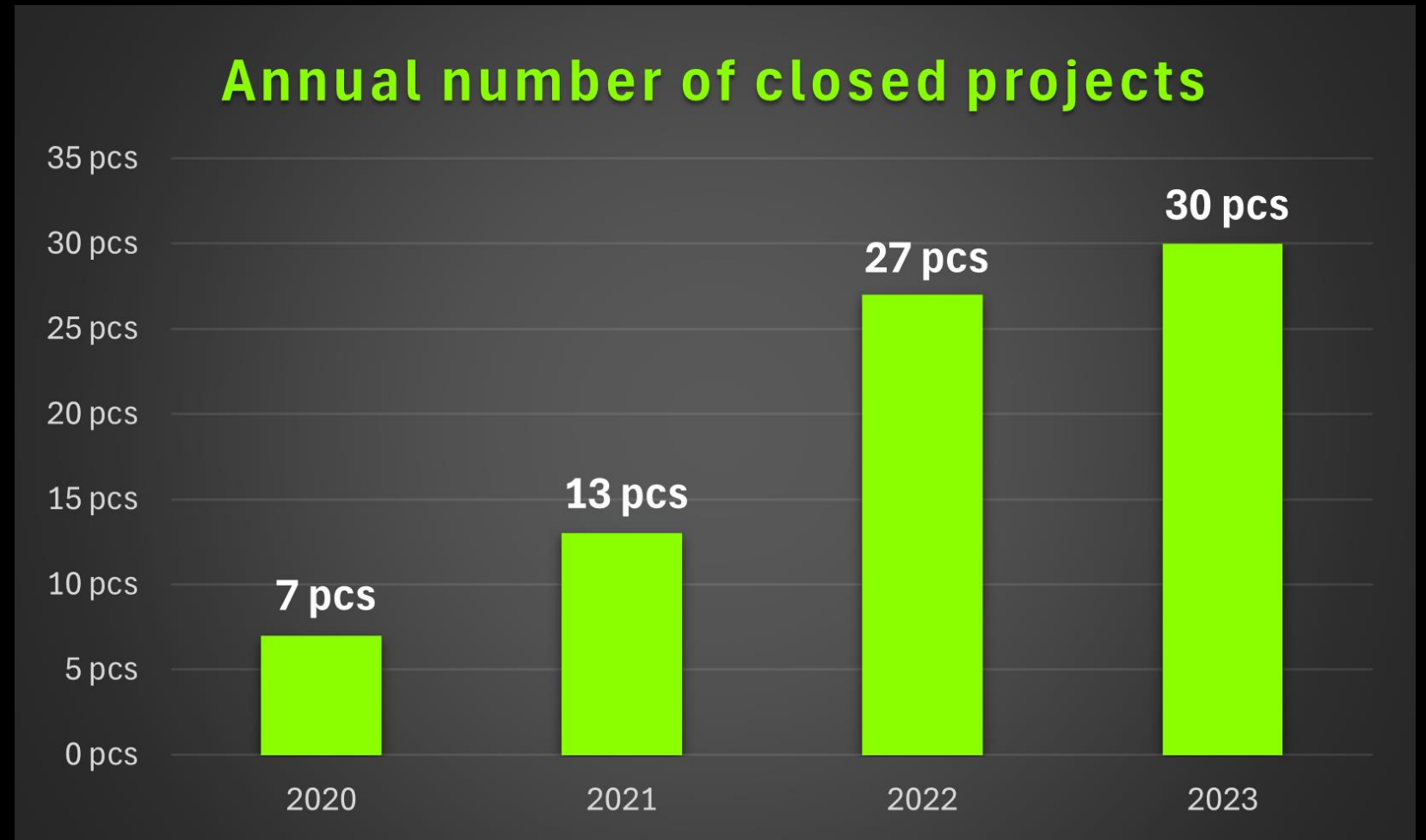
# Results





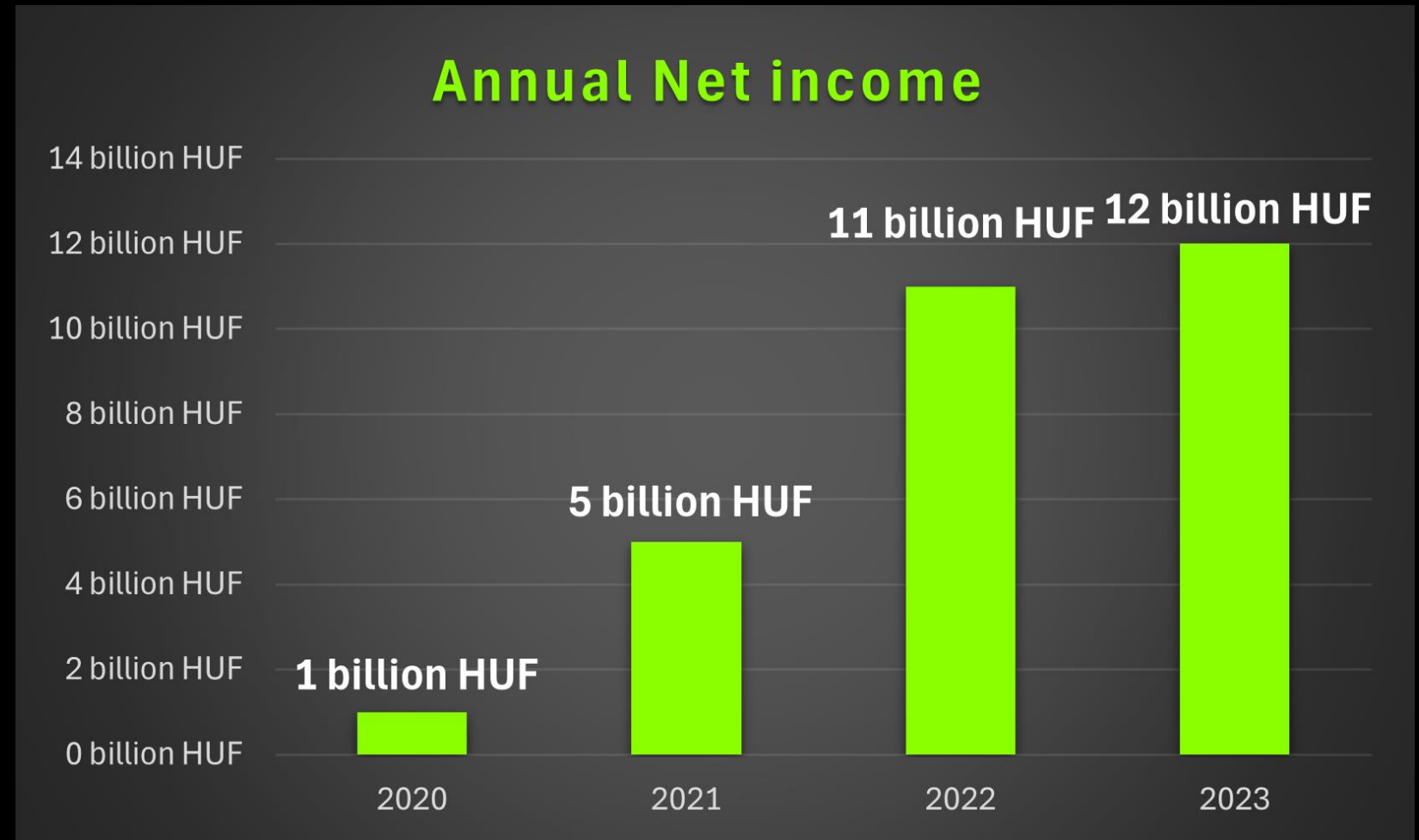


## Results





## Results





## Sustainability

### Closed developments:

247 kW installed solar park

20 - 30% reducing consumption

After every 10 000 m<sup>3</sup> concrete 1 tree planting

11 pcs electric car charger

### Future developments :

Minimizing waste formation

Use of carbon-neutral materials

Solar park enlargement

Battery pack green energie storage

Configuration of Microgrid system

Reduction of cement consumption

Carbon footprint calculation





## Contacts



Phone number:

+36 30 217 5588



E-mail:

info@prebeton.hu



Site:

3358 Erdőtelek PN. 0336/18



Headquarters:

1037 Budapest, Bojtár street 51.



Website:

www.prebeton.hu

