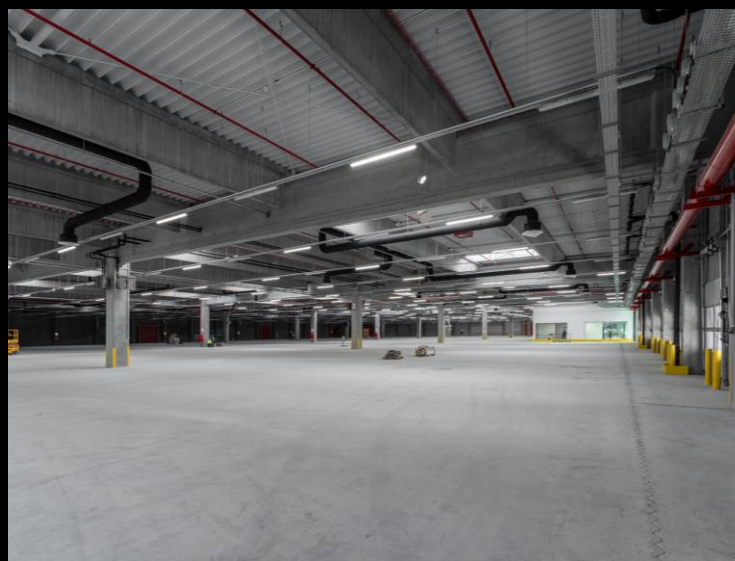
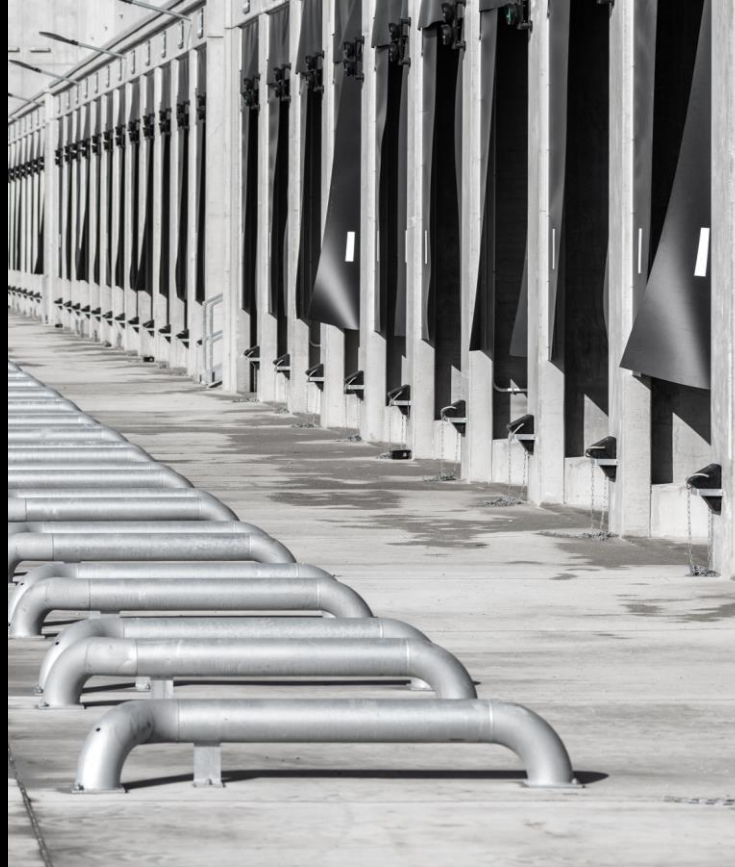




# P R E beton

## References





**Project:**  
**JYSK DCE logistics center**

**Ecser**

Year of handover: 2021

Delivered products:

Complete prefabricated  
structure

Floor area: 143 000m<sup>2</sup>

Produced quantity: 4 780 m<sup>3</sup>

















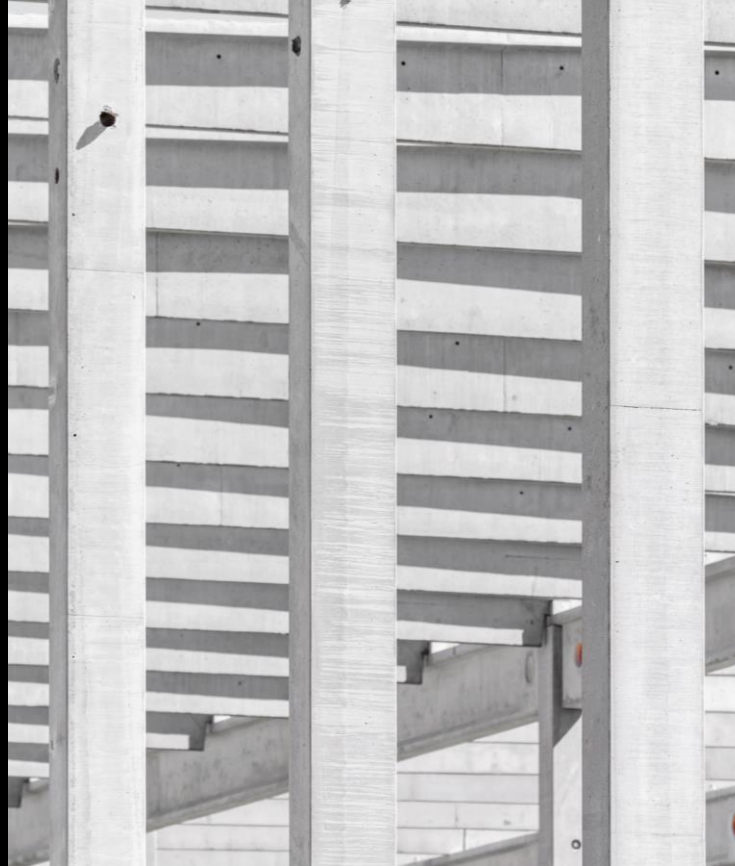












**Project:**  
**HelloParks Maglód 1**  
**logistics center**

**Maglód**

Delivered products:  
Complete prefabricated  
structure

Year of handover: 2021

Floor area: 46 000 m<sup>2</sup>

Produced quantity: 3 630 m<sup>3</sup>









PRESTRESS  
FIRST COLUMN

P R E beton





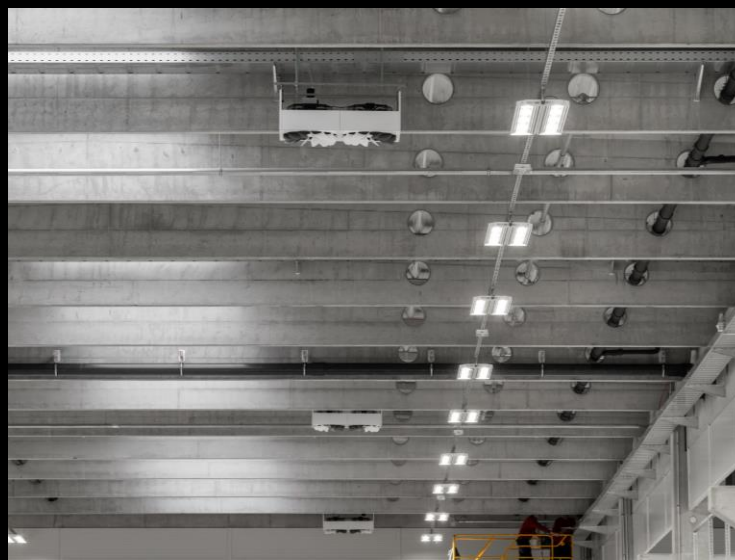












**Project:**  
**OBO Bettermann**  
**warehouse and production**  
**hall**

**Bugyi**

Delivered products:  
Complete prefabricated  
structure

Year of handover: 2021

Floor area:

Warehouse: 4 600 m<sup>2</sup>

Production hall: 8 000 m<sup>2</sup>

Produced quantity:

Warehouse: 570 m<sup>3</sup>

Production hall: 960 m<sup>3</sup>









**Project:**  
**SEMCORP lithium-ion  
battery  
separator film factory**  
**Debrecen**

Year of handover: 2022

Delivered products:

Complete prefabricated  
structure

Floor area: 48 000 m<sup>2</sup>

Produced quantity: 5 900 m<sup>3</sup>













Special, 39 meter long  
prefabricated beam















**Project:**  
**CHERVON-Auto**  
**production hall**  
**Miskolc**

Year of handover: 2022

Delivered products:

Complete prefabricated  
structure

Floor area: 24 000 m<sup>2</sup>

Produced quantity: 4 070 m<sup>3</sup>













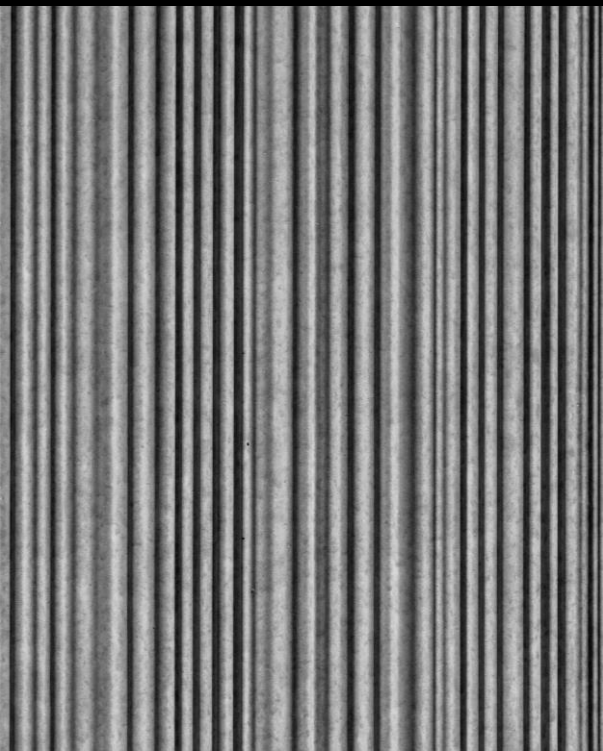












**Projects:**  
**BudaPart**  
**urban district development**

**Budapest**

BOG Hotel and office buildings  
Budart BRF residential building  
BRG building

Budapest

Year of handover: 2022

Delivered products:  
prefabricated sandwich wall  
panels

Facade wall panel:

BOG Hotel: 18 000 m<sup>2</sup>

BOG Office: 12 700 m<sup>2</sup>

BRF residential building: 12 000 m<sup>2</sup>

Produced quantity:

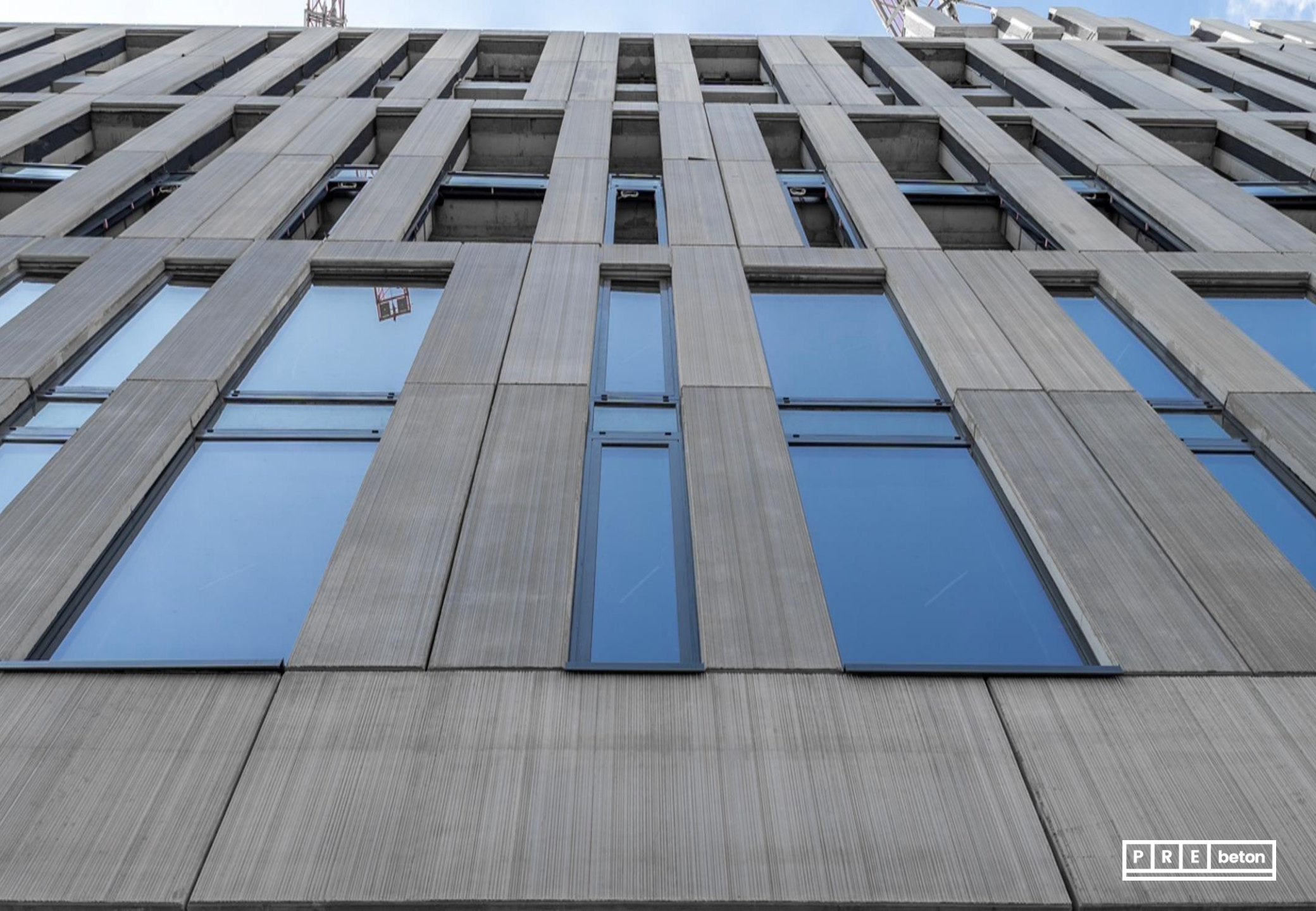
BOG Hotel: 1200 m<sup>3</sup>

BOG office: 940 m<sup>3</sup>

BRF residential building: 850 m<sup>3</sup>

BRG building: 2 900 m<sup>3</sup>





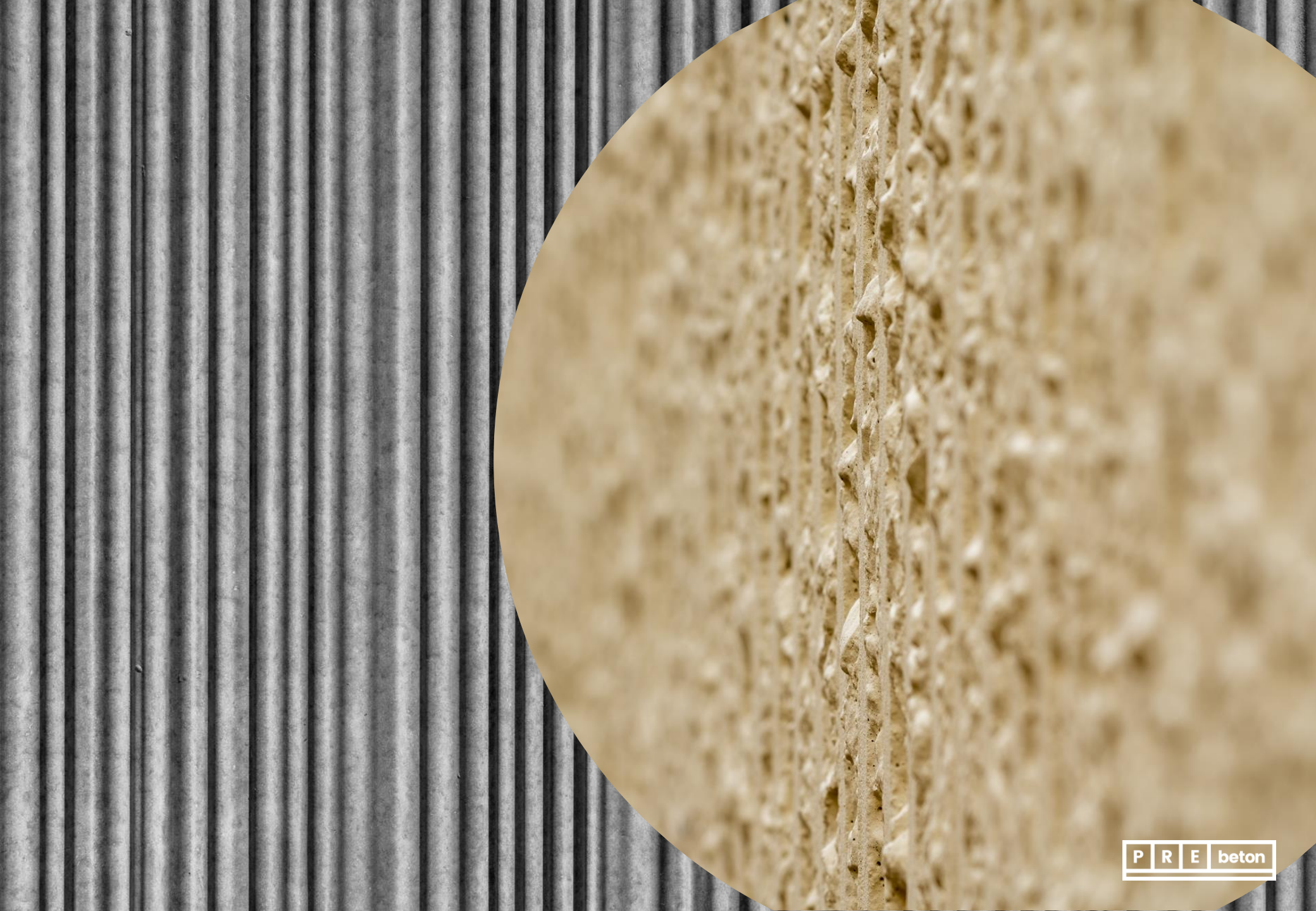
























**Project:**  
**Apollo FGS II**  
**production hall**  
**Gyöngyöshalász**

Year of handover: 2022

Delivered products:

Complete prefabricated  
structure

Floor area: 8 800 m<sup>2</sup>

Produced quantity: 820 m<sup>3</sup>



















**Project:**  
**Airbus**  
**production hall and**  
**warehouse**

**Gyula**

Year of handover: 2022

Delivered products:

Complete prefabricated  
structure

Floor area: 13 000 m<sup>2</sup>

Produced quantity: 2 150 m<sup>3</sup>







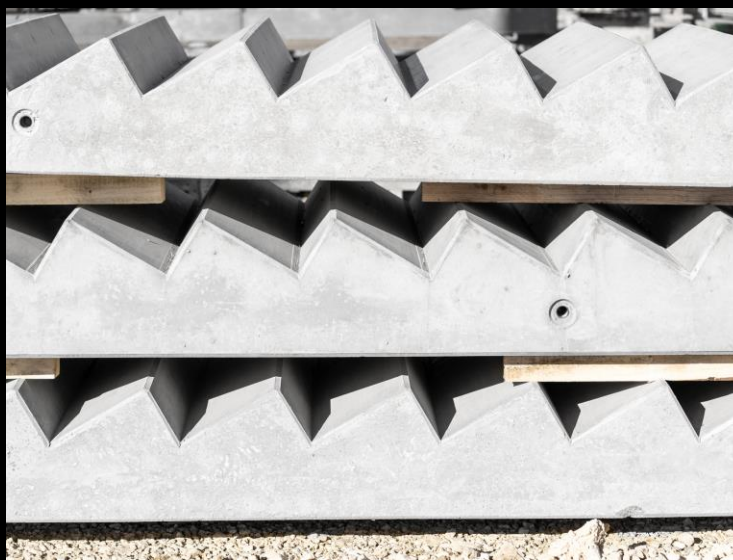












**Project:**  
**SK Ivánca Battery factory**  
**Ivánca**

Year of handover: 2022

Delivered products:

Complete prefabricated  
structure

Floor area: 30 000 m<sup>2</sup>

Produced quantity: 2 900 m<sup>3</sup>









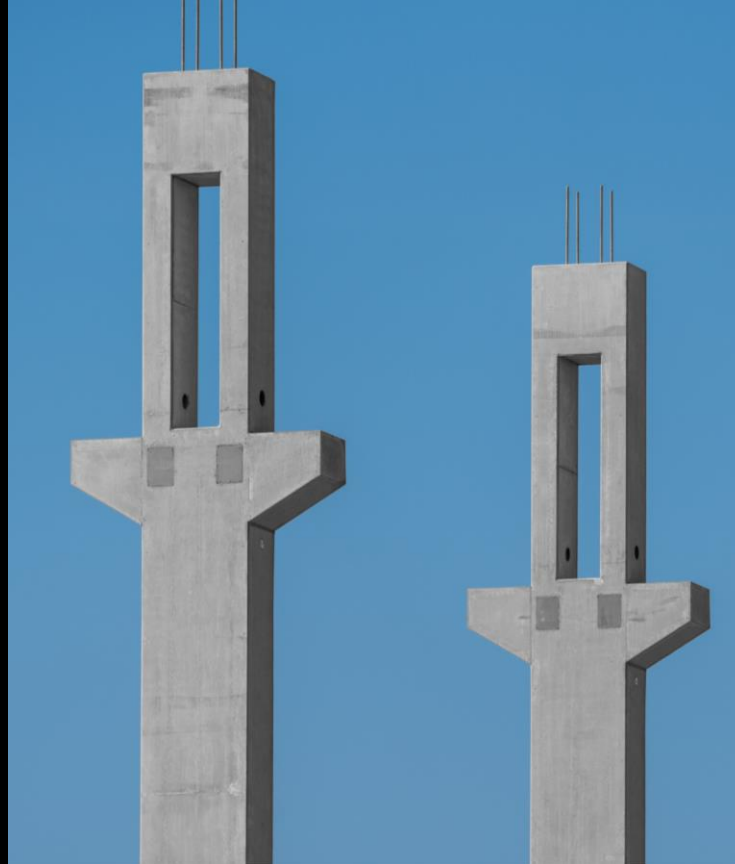












**Project:**  
**HYDRO Alumínium bottom-**  
**house and office**

**Székesfehérvár**

Year of handover: 2023

Delivered products:

Complete prefabricated  
structure

Floor area: 21 000 m<sup>2</sup>

Produced quantity: 3 540 m<sup>3</sup>





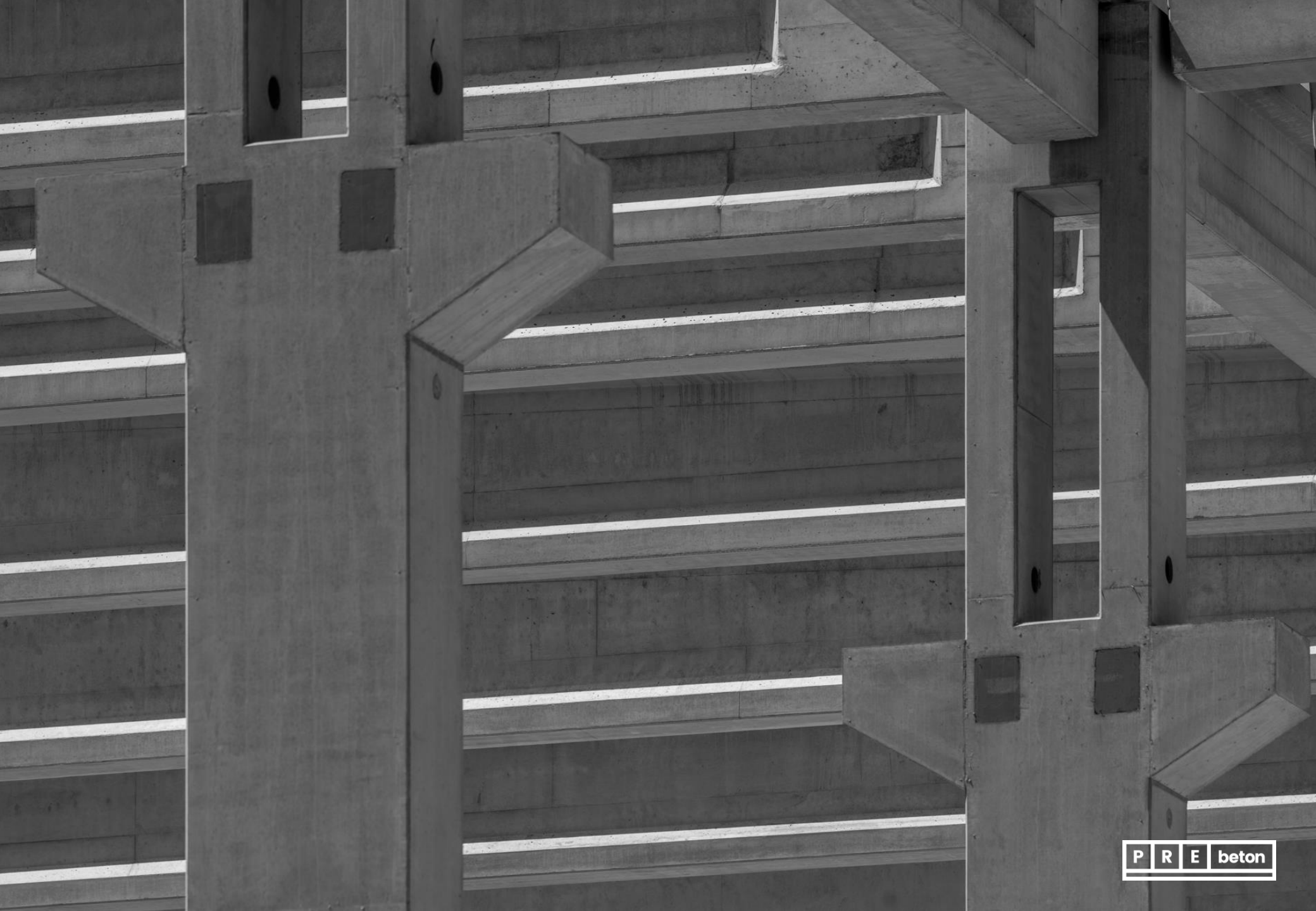




















**Project:**  
**SIEMENS ENERGY**  
**production hall**  
**Budapest**

Year of handover: 2023

Delivered products:

Complete prefabricated  
structure

Floor area: 17 000 m<sup>2</sup>

Produced quantity: 3 660 m<sup>3</sup>









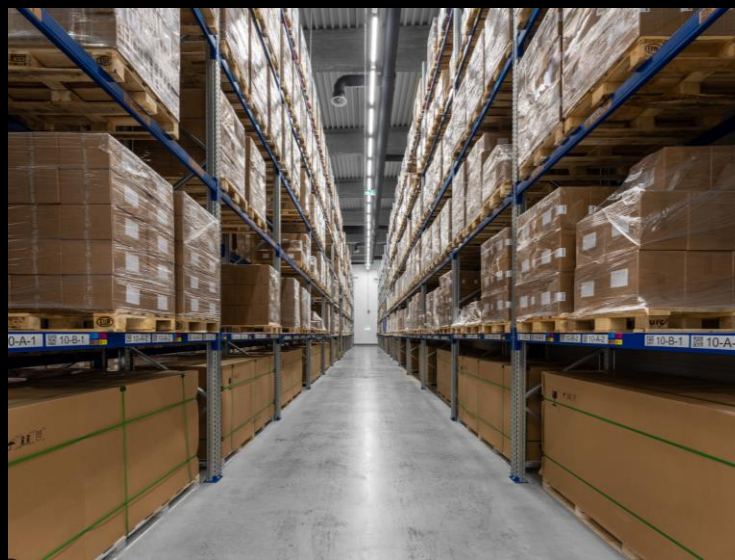












**Project:**  
**Hungaropharma BLKII**  
**office building and**  
**warehouse**

**Budapest**

Year of handover: 2023

Delivered products:

Complete prefabricated  
structure

Floor area: 600 m<sup>2</sup>

Produced quantity: 270 m<sup>3</sup>





**Project:**  
**Omega Laser warehouse**  
**and office building**

**Nagytarcsa**

Year of handover: 2023

Delivered products:

Complete prefabricated  
structure

Floor area: 2 000 m<sup>2</sup>

Produced quantity: 240 m<sup>3</sup>













**Project:**  
**National Film Institute**  
**Public Nonprofit Ltd. Site**  
**development**

**Fót**

Year of handover: 2023

Delivered products:

Kcomplete prefabricated  
products:

Floor area:

1. building: 540 m<sup>2</sup>

2. building: 700 m<sup>2</sup>

3. building: 1000 m<sup>2</sup>

4. building: 1000 m<sup>2</sup>

5. building: 1000 m<sup>2</sup>

Produced quantity: 578 m<sup>3</sup>













**Project:**  
**HelloParks Maglód 4**  
**logistics hall**  
**Maglód**

Year of handover: 2023

Delivered products:

Complete prefabricated  
structure

Floor area: 16 500 m<sup>2</sup>

Produced quantity: 3 930 m<sup>3</sup>





















**Project:**  
**Panattoni City Logistics**  
**Törökbálint**

Year of handover: 2023  
Delivered products:  
Complete prefabricated  
structure

Floor area:  
A building 3 382 m<sup>2</sup>  
B building: 4 178 m<sup>2</sup>  
C building: 5 553 m<sup>2</sup>  
D building: 4 178 m<sup>2</sup>  
Produced quantity: 2 130 m<sup>3</sup>















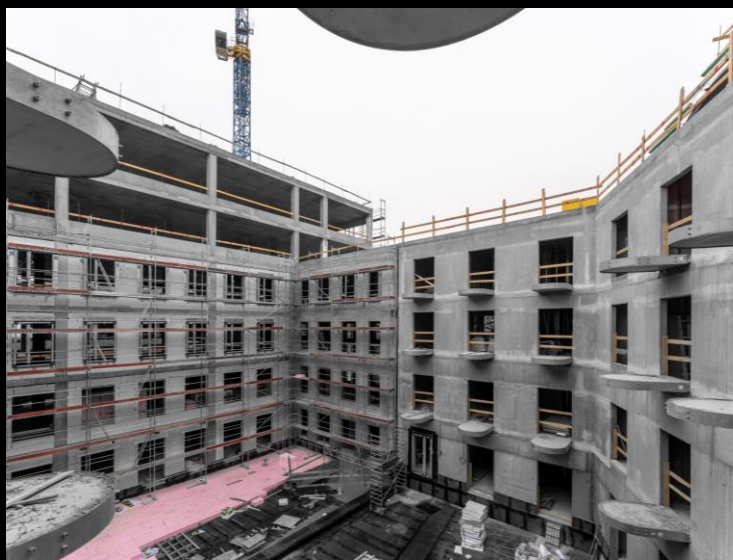






 PANATTONI





**Project:**  
**Bem Hotel**  
**Budapest**

Year of handover: 2023

Delivered products:  
Prefabricated balconies

Floor area:

Ground floor: 1587 m<sup>2</sup>

1. floor: 1395 m<sup>2</sup>

2. floor: 1395 m<sup>2</sup> – balcony – 10 pc

3. floor: 1395 m<sup>2</sup> – balcony – 10 pc

4. floor: 1395 m<sup>2</sup> – balcony – 10 pc

5. floor: 319 m<sup>2</sup>

Produced quantity: 30 db









**Project:**  
**Lamborghini showroom**  
**Budapest**

Year of handover: 2023

Delivered products:  
Complete prefabricated  
structure

Floor area: 635 m<sup>2</sup>

Produced quantity: 73 m<sup>3</sup>













**Project:**  
**CATL battery factory**  
**Debrecen**  
Year of handover: 2022  
Delivered products:  
Complete prefabricated  
structure  
Floor area: 23 890 m<sup>2</sup>  
Produced quantity: 3945 m<sup>3</sup>





















**Project:**  
**Melea Hotel**  
**Sárvár**

Year of handover: 2023

Delivered products:  
Unique prefabricated  
products: reception desk,  
movie theater, smoking  
room, bench, flagstone  
Produced quantity: 70 m<sup>3</sup>





















**Project:**  
**INPARK**

**Debrecen**

Year of handover: 2023

Delivered products:  
Complete prefabricated  
structure

Floor area: 60 919 m<sup>2</sup>

Produced quantity: 8 044m<sup>3</sup>





P R E beton



